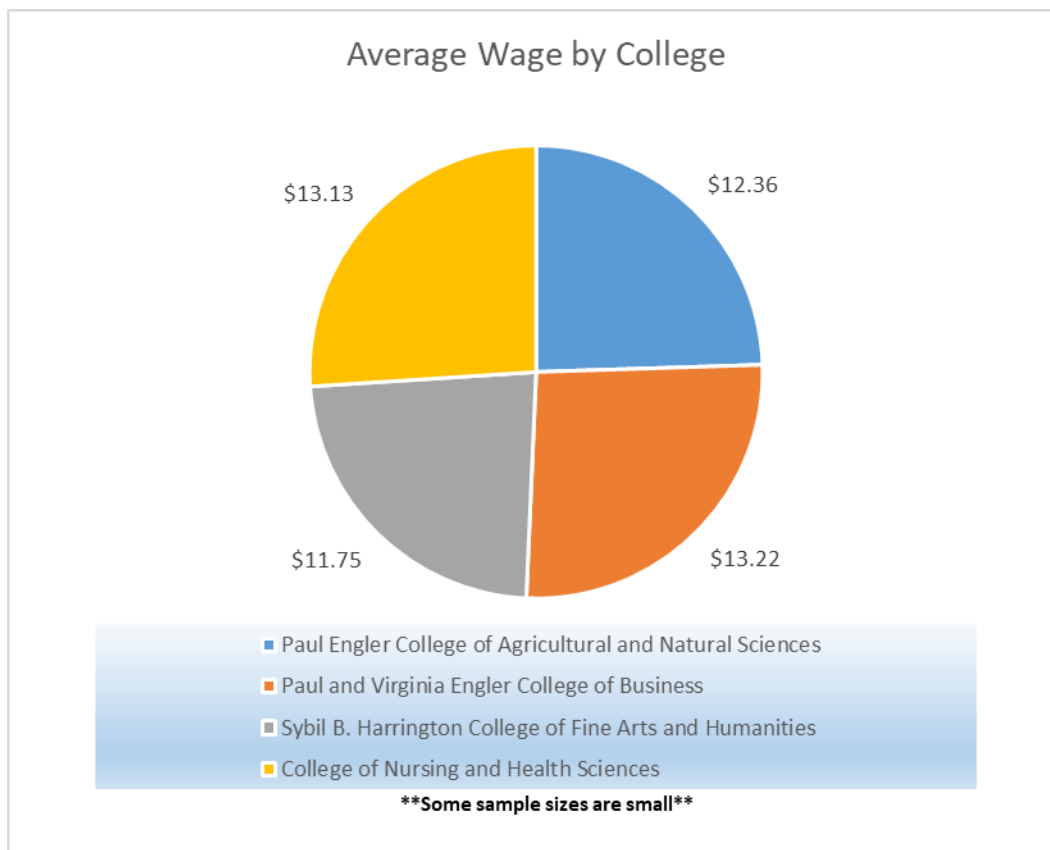


## WTAMU Experiential Education Program Fall 2018 Executive Summary

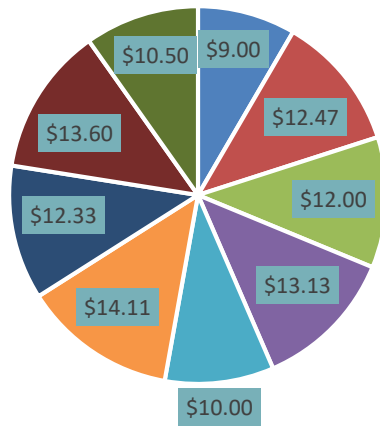
The Experiential Education program (formerly Cooperative Education) began in the spring of 1994. A Title VIII Department of Education grant started the program, and we placed the first students in the spring of 1994. Our vital statistics to date include:

- Monitored or documented 4,606 individual placements to date (220 in Fall 2018)
- Placed or documented 3,181 students in internships (unduplicated count)
- Average GPA of the Fall 2018 class – 3.34
- Average wage for paid internships for the Fall 2018 class - \$12.36 per hour



The School of Engineering, Computer Science and Mathematics didn't report any paid internships during the semester.

## Average Wage By Department



- Art, Theatre & Dance
- Communication
- Office of General Majors
- Sports Exercise Sciences
- Criminal Justice
- Accounting, Economics & Finance
- Mgt., Mkt & GBUS
- Agriculture
- Life, Earth & Envir. Science

• Some sample sizes are small

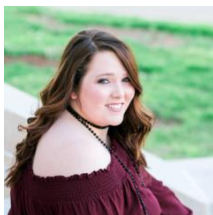
## What Did You Like Best?

I enjoyed meeting new producers and sharing their stories on social media.



**Ellis Linke**  
**Agricultural Media & Communication major**  
**Intern with Ogallala Commons, Amarillo, TX**

I loved the relationships I was able to build within my team and the entire department. I also really enjoyed my freedom to take ownership over projects and see them through completion. Overall my entire experience was amazing, but those are the two things that stick out to me.



**Madison Little**  
**MBA**  
**Intern with Southwest Airlines, Dallas, TX**

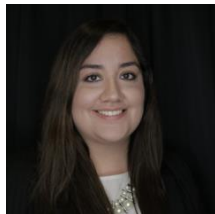
I liked the experience of meeting new people and gaining a different set of skills than what I have learned at school. I liked seeing the day to day things that are important in graphic design. It also taught me the research and persistence that is included in working in advertisement.



**Laramie Gill**  
**Graphic Design major**  
**Intern with Creative Cannon, Amarillo, TX**

---

The relationships I got to for through this internship. I have gotten to network with a lot of people.



**Diana Baeza**  
**MBA**  
**Intern with Amarillo Hispanic Chamber of Commerce, Amarillo, TX**

---

I liked that I not only learned an enormous amount of medical information; I was able to make some profoundly influential connections that will tremendously help guide me in my future.



**Kailey Felderhoff**  
**Biology major**  
**Cardiology Center of Amarillo, Amarillo, TX**

## Internship Partners- Fall 2018



**Agape Center**

**Agri- Plex Transport**



**Amarillo Deaf Church**



AMARILLO  
economic development corp.







## Big Spring Psychiatric Hospital







# Canyon Physical Therapy



## CBJ Farms









**F·S·S**  
FAMILY SUPPORT SERVICES  
OF AMARILLO





**Hales Farm**



**HANDS ON AMARILLO**  
helping you help others

## Happy ISD



**HAPPY  
STATE BANK**  
AND TRUST COMPANY

 Member FDIC

  
**HEAL** *the* **CITY**

*Hendricks*  
**Reining Horses Inc.**

# HEREFORD Independent School District



**Hughes Livestock**





**Klein Event Center**

**Klondike ISD**



## Lifetime Shower

LOCAL  LLANO

EXPERIENCE YOUR FOOD SHED





*Passion. Commitment. Experience.*



Panhandle Independent Living Center



**The Pavilion**

Northwest Texas Healthcare System

**Price Futures Group**



*River Road ISD*





# Southwest<sup>®</sup>

**Stewart, Martin, Dudley & Webb, PC**

**STRATFORD ISD**



**Sunset Blvd Studios**

Professional & Affordable Recording Studio in Nashville, TN

**Supreme Cleaning Services**

**Tate Farms**









*Walgreens*



Westminster *Canterbury*  
SHENANDOAH VALLEY  
*Connected for Life*



***WT*** Enterprise Center



## WT Athletics



## WTAMU Communication and Marketing



## **WTAMU Nursing Department**



## **WTAMU Student Enrollment, Engagement and Success**

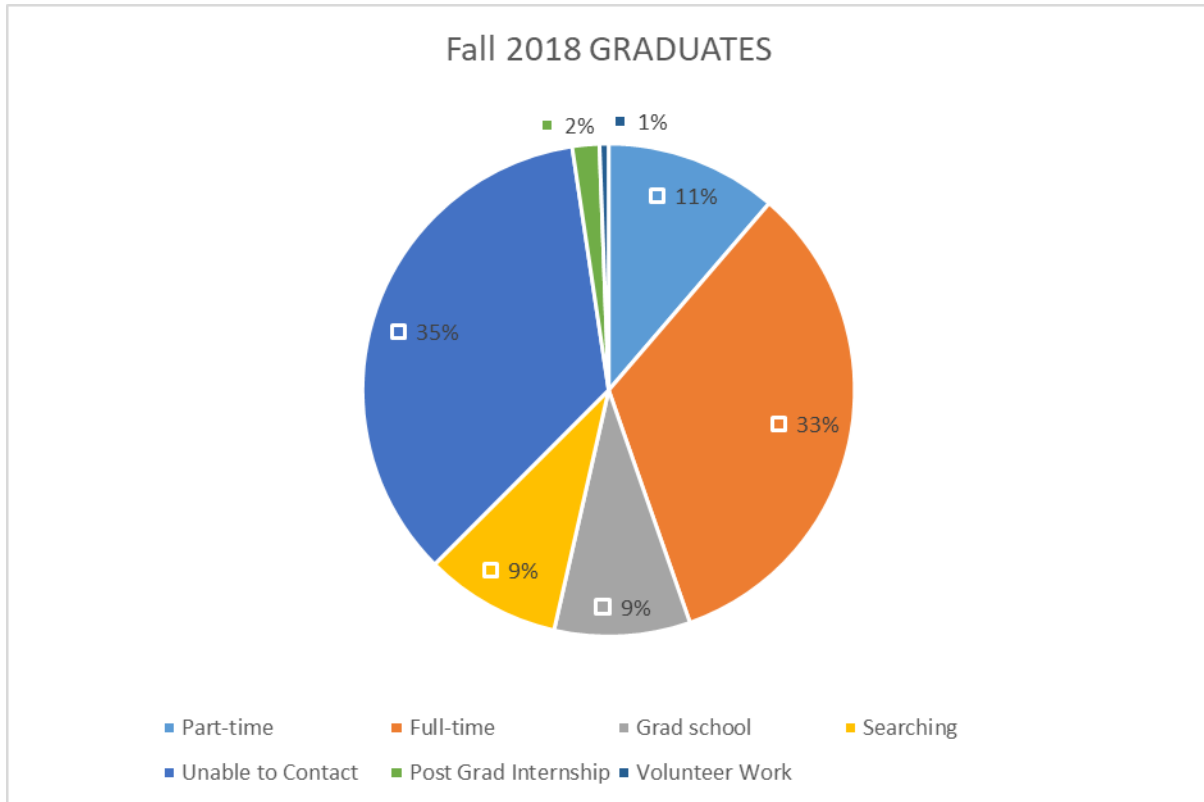


**WTAMU Writing Center**



## Intern to Full-Time for Fall 2018

This semester 172 interns graduated. Forty-four percent of these students have either a full-time or part-time job, 9% are going to graduate school, 9% are seeking and we were unable to contact 35%. One student is doing volunteer work and 3 are pursuing post graduate internships. The chart below represents these numbers.



There was a large number of students we were not able to contact. We will increase efforts on tracking those students down in future semesters.

## Fall 2018 Interns

Out of the 220 interns, 35% got full-time positions, 10% are going to graduate school, 11% are working part-time, 2% are completing a post-graduation internship or volunteering, 35% are either searching or we were unable to contact them. Seven percent are continuing in their internship or seeking another internship and/or pursuing their degree.

Internships continue to be an effective way for students to gain major-related experience and in many cases, a professional position upon graduation!

Fall 2018 Interns

